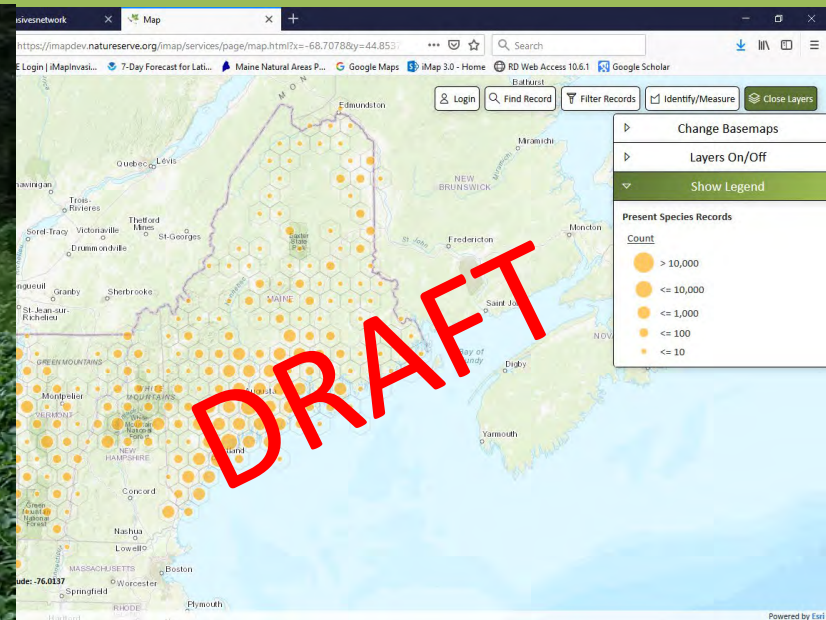


State of the state update: Invasive terrestrial and wetland plants



**Nancy Olmstead, Invasive Plant Biologist
DACF, Maine Natural Areas Program**

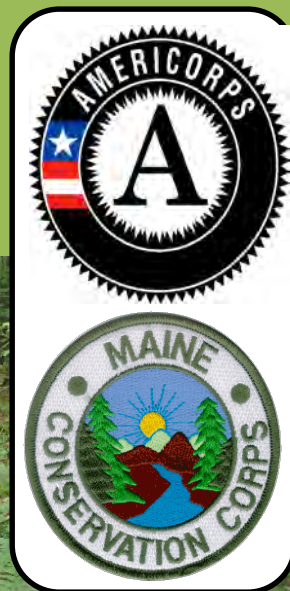
*MISN Annual Meeting
April 3, 2019*





Additional survey and treatment on state parks and lands

- Manual and herbicide control for small infestations
- Follow up and advise on contractor treatments
- 13 new sites surveyed and 22 sites treated in 2018
- We're making progress!



Maine Invasive Plant Field Guide

- Essential ID and control information for 46 species
- Waterproof, small format
- Support from US EPA, MOHF, Maine DOT, DACF, Maine Woodland Owners



In progress: revised Advisory List of invasive plants

ADVISORY LIST:

- Non-regulatory list maintained by MNAP with review from TIPSAC
- Goal: provide information to land managers on which plants are most harmful, in which habitats

1. Reviewed other states' invasive plant lists, gathered TIPSAC suggestions



2. List of plants to review



3. Reviewed scientific literature to evaluate ecological impacts and biological traits

Plant Evaluation Summary									
Evaluation Date	2017-02-10								
Species Scientific Name	Acer glaberrimum								
Species Common Name	Horseshoe maple								
Category Evaluate	Q - Advisory Ranking								
Summary	This species should probably score 10 in the Moderate range.								
Points	Political	Practical	Science	Assessment	Relative	Position	Maximum	Points	Score
	01	100	01	100	01				
<p>Question: Impacts to abiotic or abiotic processes? Answer: 1. 10. Potential to cause significant alteration of abiotic conditions or abiotic processes, e.g., increased sedimentation, soil erosion, changes in water table. 1 Points</p> <p>Question: Impacts to biotic or biotic processes? Answer: 1. 10. Potential to cause significant alteration of biotic conditions or biotic processes, e.g., increased sedimentation, soil erosion, changes in water table. 1 Points</p> <p>Question: Changes to vegetation community structure? Answer: 1. 10. Potential to significantly alter structure of at least one layer, e.g., substantially changes percent cover of species. 1 Points</p> <p>Question: Changes to vegetation community composition? Answer: 1. 10. Potential to significantly alter vegetation community composition, e.g., produce a significant reduction in abundance of at least one native vegetation species, allelopathic compounds are introduced. 1 Points</p> <p>Question: Impacts on fauna (and microbial communities)? Answer: 1. 10. Potential to cause minor impact to native fauna populations, e.g., negative effects are temporary or non-lethal. 1 Points</p> <p>Question: Impacts on flora (and microbial communities)? Answer: 1. 10. Potential to cause minor impact to native flora populations, e.g., negative effects are temporary or non-lethal. 1 Points</p>									



4. Peer review of results by TIPSAC, incorporate feedback, finalize rankings.



5. Revised Advisory List



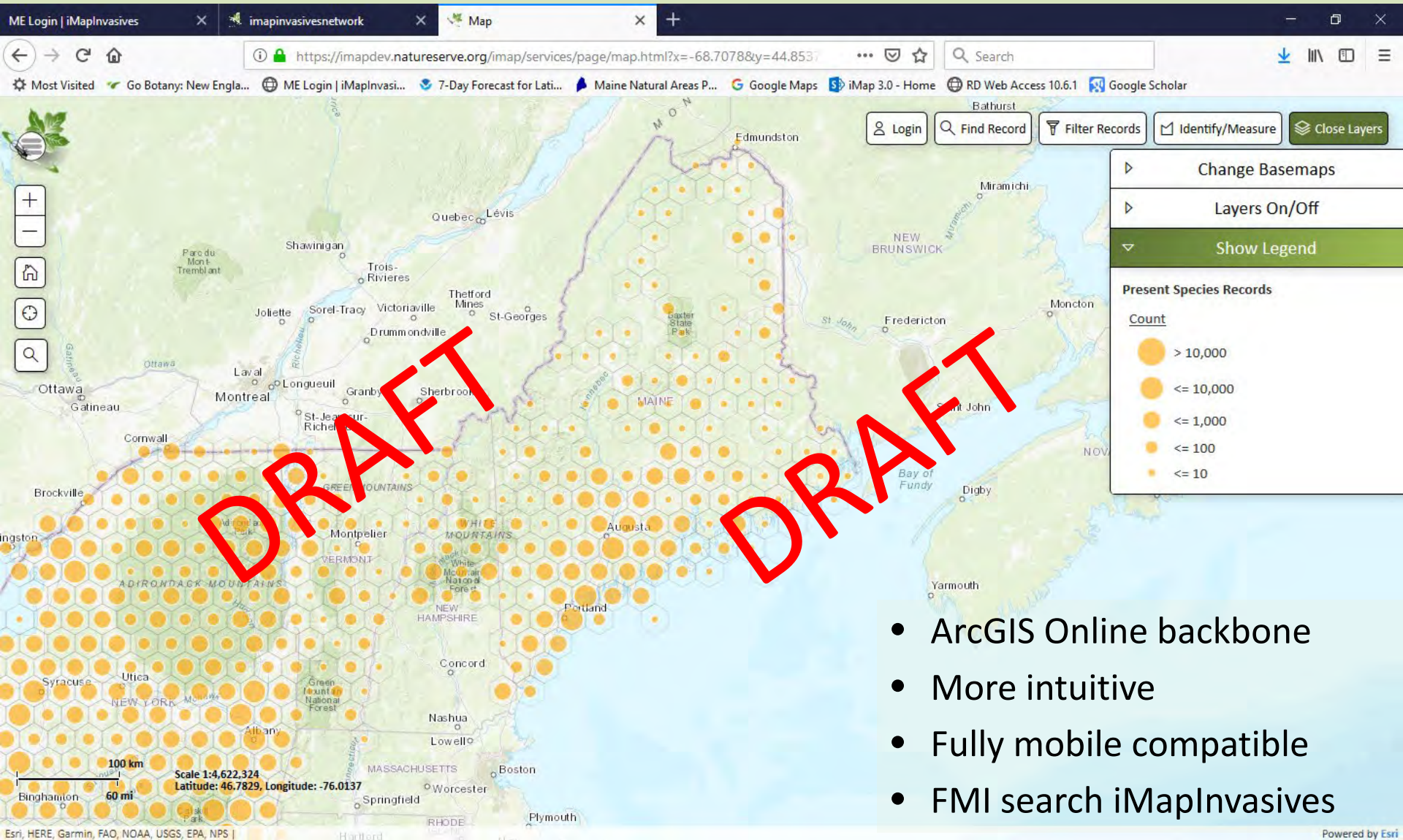
6. Public comment period
SPRING 2019



7. Publish final list

iMapInvasives online mapping tool

New interface launching on 4/15!



- ArcGIS Online backbone
- More intuitive
- Fully mobile compatible
- FMI search iMapInvasives

Connecting landowners with invasive plant control professionals

Maine.gov Agencies | Online Services | Help Page Tools GO

Got Pests?

Home | Contact Us Site Index | Search Got Pests:

GOT PESTS?

- About Got Pests?
- Is It Really a Pest?
- Pest Solutions
- A Word About Pesticides
- Want to Know More?

Ask the EXPERT

Home > [Invasive Pests](#) > List of Licensed Companies Offering Services for Control of Invasive Terrestrial Plants

List of Licensed Companies Offering Services for Control of Invasive Terrestrial Plants

The following list includes companies that are licensed to provide services for control of invasive terrestrial plants in Maine. The Maine Board of Pesticides Control does not recommend these above any others. This is not a complete list of licensed companies; these responded to a letter asking if they wanted to be listed. Others wanting to be listed should contact the Board by emailing pesticides@maine.gov or calling 207-287-2731 (created October 2018).

For more information about invasive plants:

- [Maine Natural Areas Program](#)
- [State Rules re Invasive Plants administered by the Maine Horticulture Program](#)

Company Name	Company Address	Phone Number	E-mail/Webpage	Area Served
Absolutely Complete Property Services	8 Evergreen Farms Rd, Scarborough, ME 04074	207-415-8011	nhjort@acps.me	Androscoggin, Cumberland, Oxford, Sagadahoc, and York counties
Aroostook Arboriculture Inc.	PO Box 402, Presque Isle, ME 0769	207-227-4726	darren@groundperfectionspecialists.com	Statewide
Bartlett Tree Experts	9 Washington Ave, Scarborough, ME	207-883-3340	ntucker@bartlett.com	Cumberland, Lincoln, Sagadahoc, and York counties

BPC opt-in list of licensed herbicide applicators –
contact BPC to be added to list

<https://www.maine.gov/dacf/php/gotpests/terrestrial-invasive-companies.html>

Connecting landowners with invasive plant control professionals

***NEED: list of non-herbicide
or herbicide+ professionals***

Mechanical

Manual

Goats

Flame weeding

Other??

Contact me to be listed!



Other new resources



NATURAL AREAS

Invasive Plants



Asiatic Bittersweet (*Celastrus orbiculatus*)

- What are invasive plants?
- How did they get here?
- Why are they successful?
- What is their impact?
- What can we do about them?




Common Reed (*Phragmites australis*)

www.maine.gov/dacf/mnap

Invasive Plant Phenology

Maine Natural Areas Program (MNAAP)



Phenology is the science of cycles and phases in the natural world, for example the timing of flower bloom in a particular plant, year after year. Knowing the timing of different life stages of invasive plants can help land managers time their control efforts.

Size of box corresponds to an approximate proportion of individuals exhibiting the indicated behavior.
Box color refers to flower/fruit color.

In leaf:

In flower – (pink flower)

(white flower)

In fruit/seed – (red fruit)

Asiatic Bittersweet (*Celastrus orbiculatus*)

Jan	Feb	Mar	Apr	May	Jun	Jul	Aug	Sep	Oct	Nov	Dec

Autumn Olive (*Elaeagnus umbellata*)

Jan	Feb	Mar	Apr	May	Jun	Jul	Aug	Sep	Oct	Nov	Dec

Black Swallowwort (*Cynanchum latifolium*)

Jan	Feb	Mar	Apr	May	Jun	Jul	Aug	Sep	Oct	Nov	Dec

Burning Bush (*Euroxanthus alatus*)

Jan	Feb	Mar	Apr	May	Jun	Jul	Aug	Sep	Oct	Nov	Dec

Common Buckthorn (*Rhamnus cathartica*)

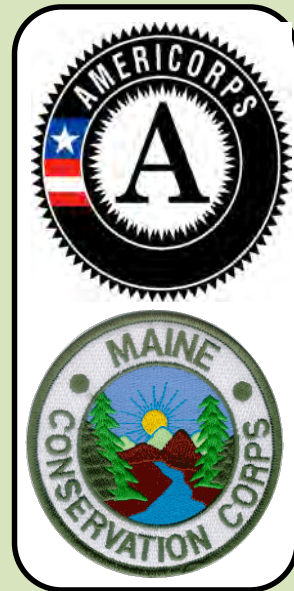
Jan	Feb	Mar	Apr	May	Jun	Jul	Aug	Sep	Oct	Nov	Dec

Common Reed (*Phragmites australis*)

Jan	Feb	Mar	Apr	May	Jun	Jul	Aug	Sep	Oct	Nov	Dec

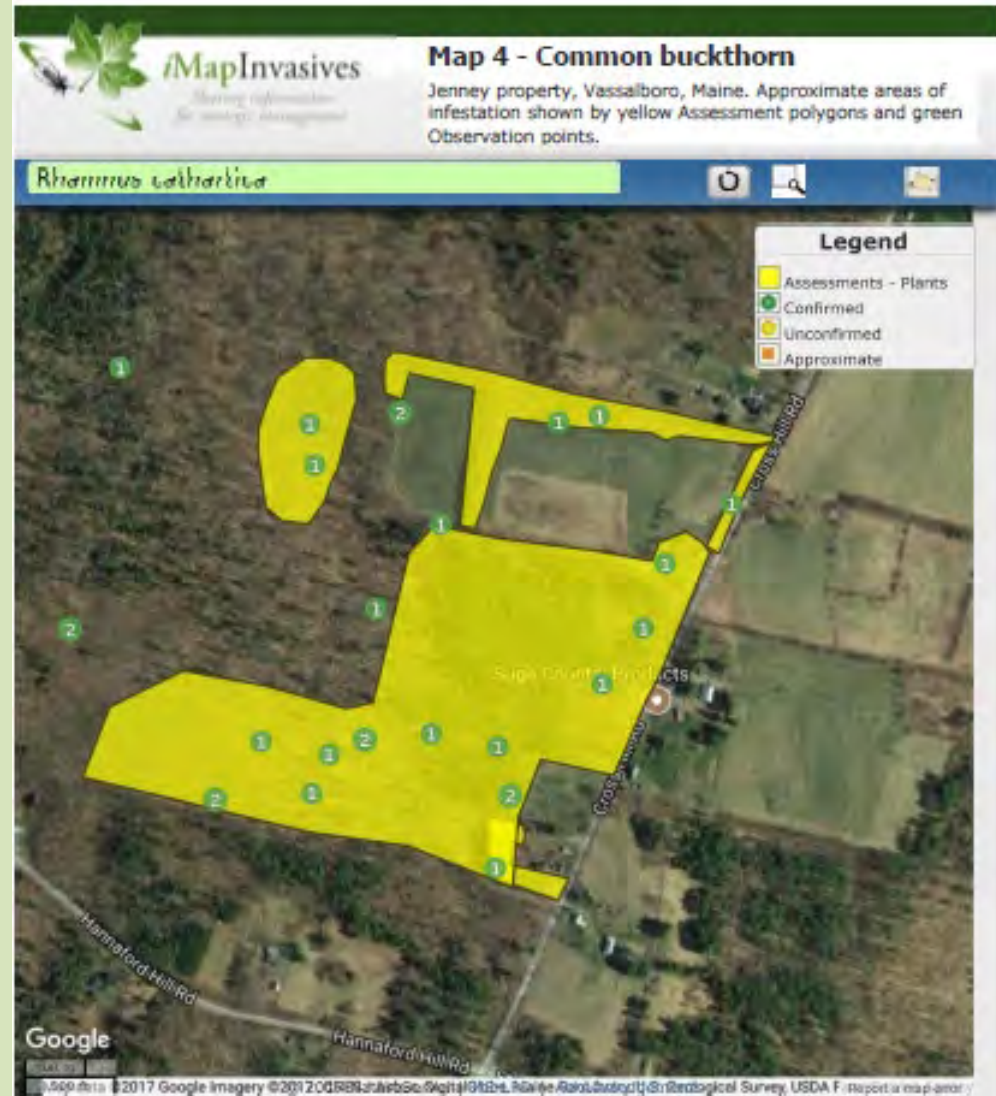
For questions: 207-287-6046

<http://www.maine.gov/dacf/mnap/>



Opportunity for farms & woodlands in Knox, Lincoln, Kennebec, Waldo, and Somerset counties

- Invasive plant survey team from local SWCD
- Detailed maps and management recommendations
- Open to EQIP-eligible landowners
- Potential implementation funding via NRCS EQIP



Early Detection/Rapid Response species

Tree of heaven

Ailanthus altissima

- confirmed in Biddeford, Falmouth, Portland, in suburban areas
- please alert us to locations

Adapted from [BONAP](#) data

Non-native
■ county
documented



Early Detection/Rapid Response species

Perennial pepperweed

Lepidium latifolium

Threat to salt marsh, cobble beach,
sandy back dune areas + edges



Early Detection/Rapid Response species



Mile-a-minute vine
Persicaria perfoliata NH, MA

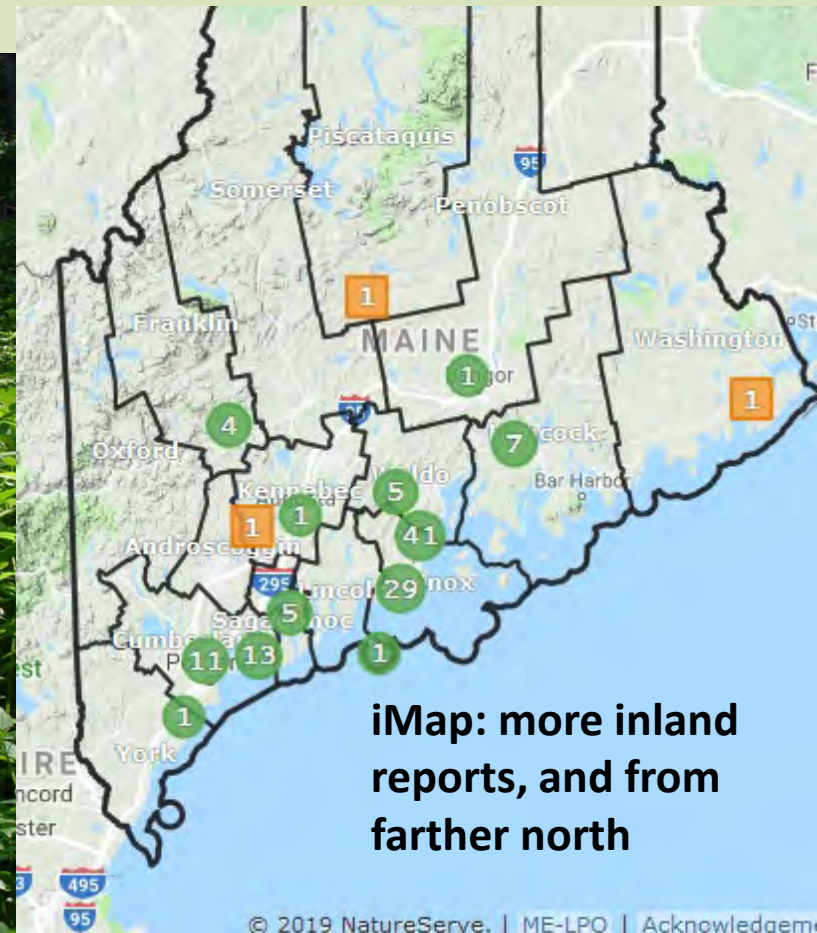


Japanese stiltgrass
Microstegium vimineum NH, MA



Emerging/“early management” species

Himalayan balsam *aka*
Ornamental or pink jewelweed
Impatiens glandulifera

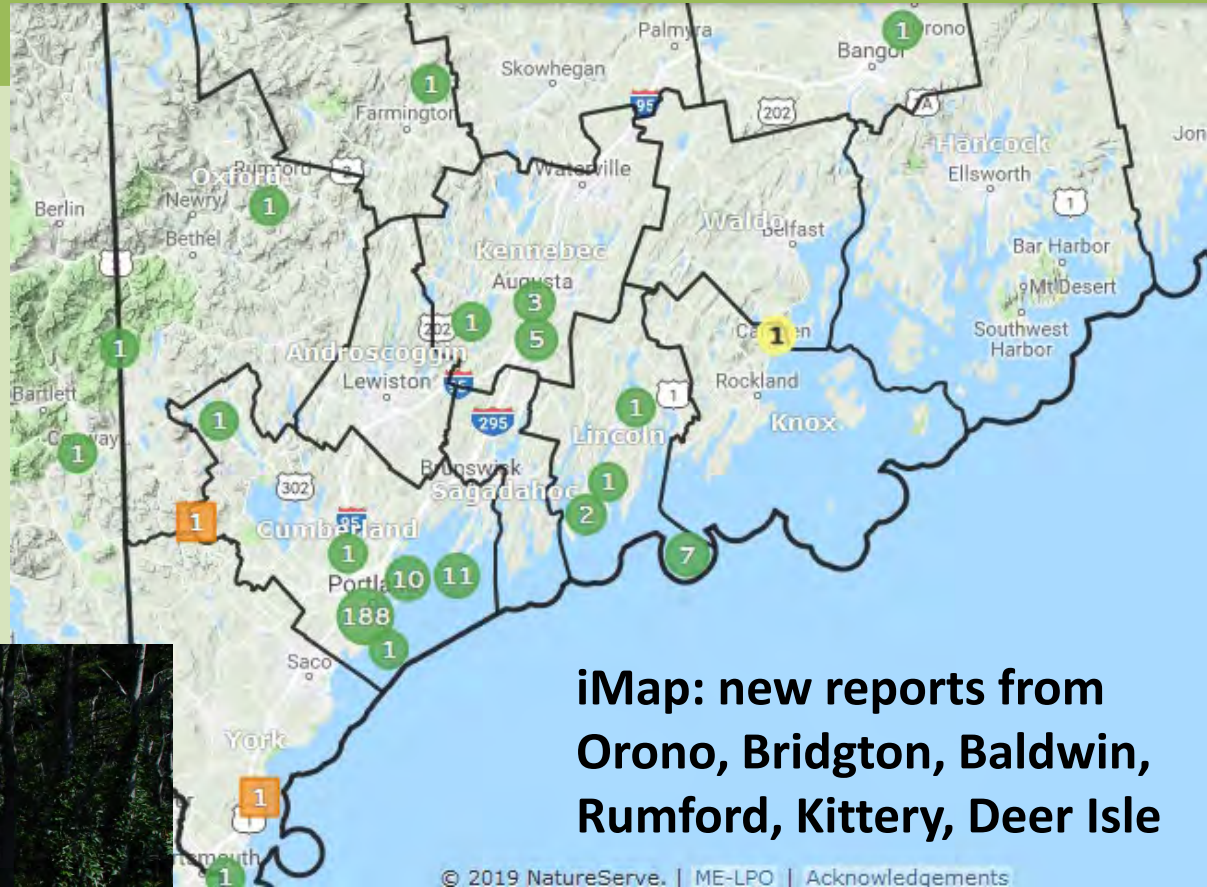


iMap: more inland
reports, and from
farther north

Emerging/“early management” species



Black swallowwort
Cynanchum louisae



iMap: new reports from Orono, Bridgton, Baldwin, Rumford, Kittery, Deer Isle

Caution: multiple reports of skin reactions from handling this plant





THANK YOU! QUESTIONS?

Nancy Olmstead

Nancy.olmstead@maine.gov

287-8046



Go to live site to see sneak peek?

<https://imapdev.natureserve.org/imap/services/page/map.html>

Garlic mustard
Alliaria petiolata

Year 1

Year 2

Year 3

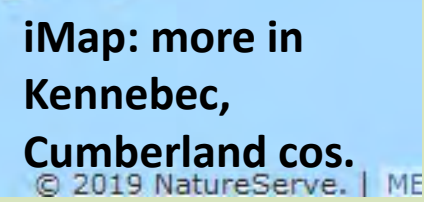
Year 4

iMap: more in Kennebec, Cumberland cos.

© 2019 NatureServe. | ME



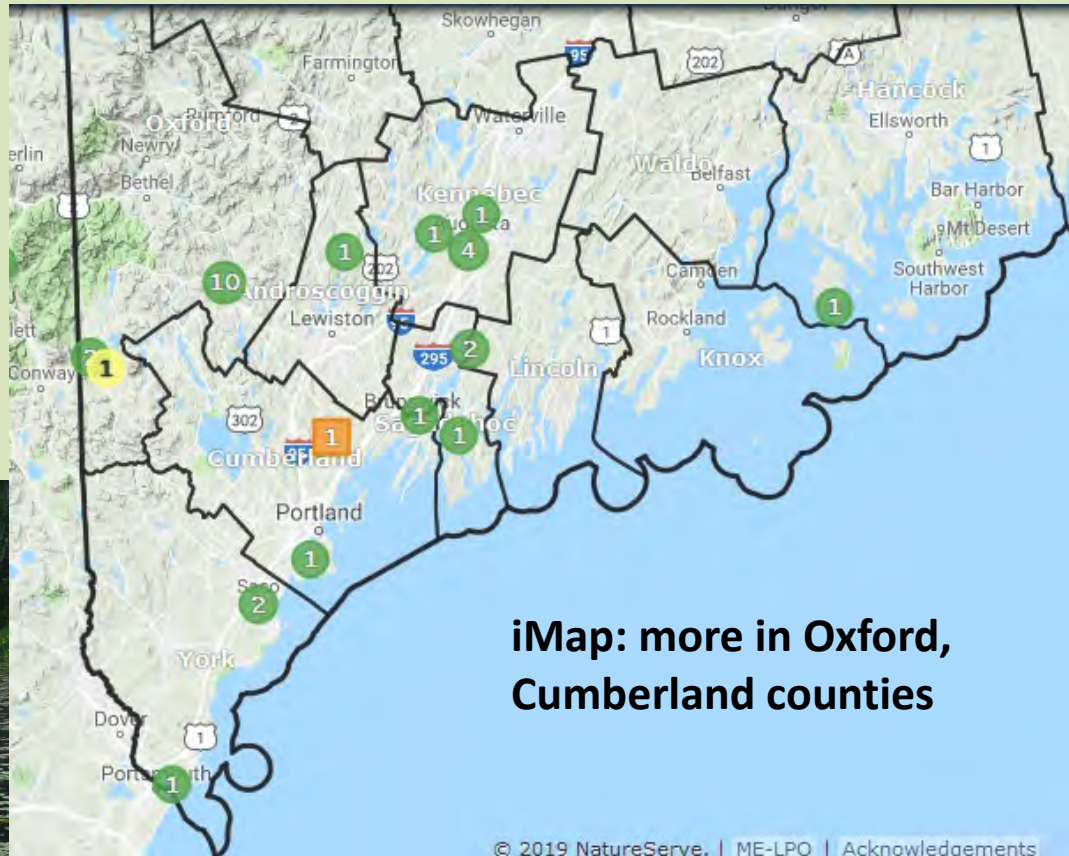
Year 2



Emerging/“early management” species



Yellow iris
Iris pseudacorus



© 2019 NatureServe. | ME-LPO | Acknowledgements

