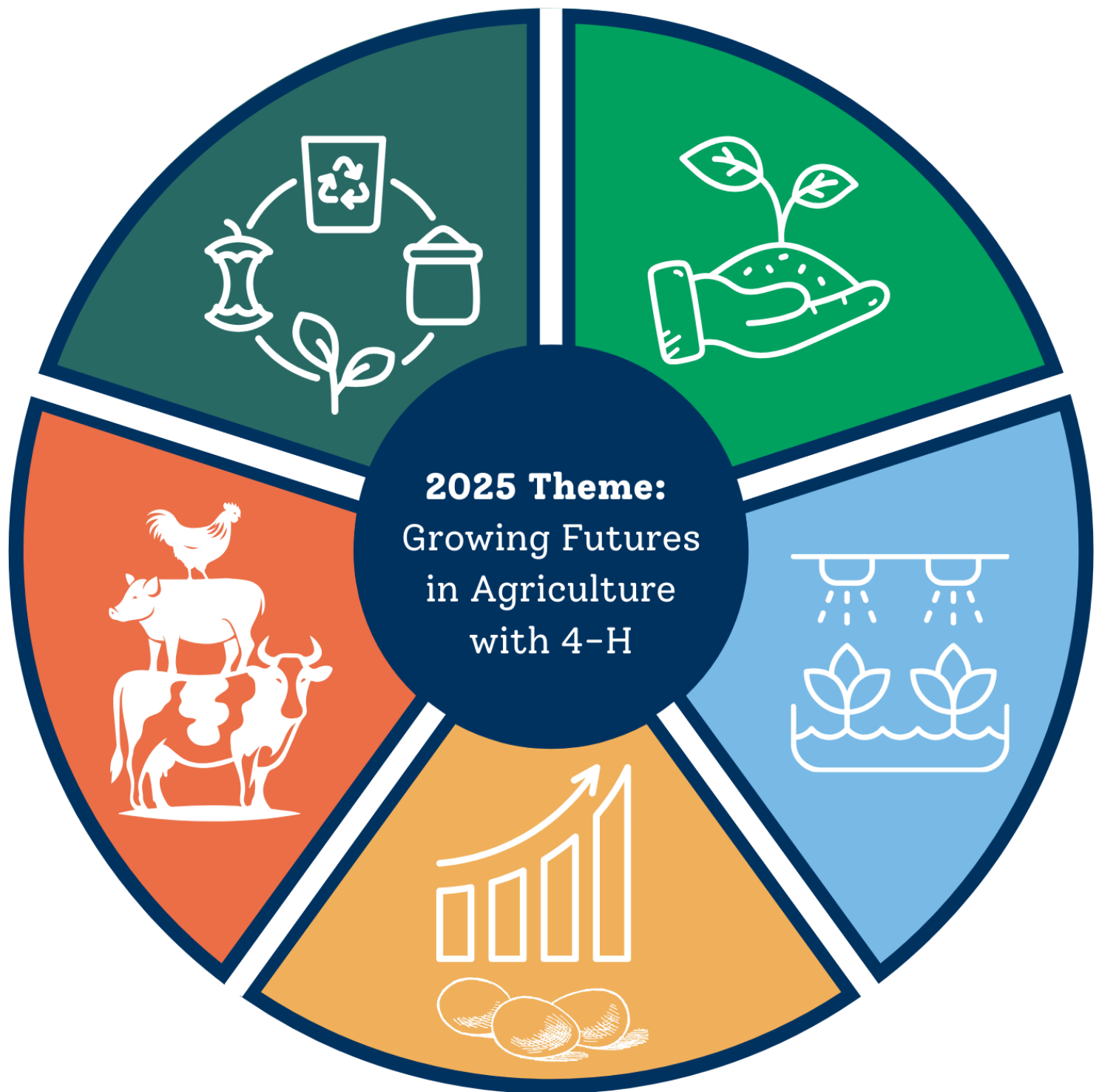


BLUE HILL FAIR



4-H Exhibit Hall
Information Booklet



Blue Hill Fair 2025

4-H Information Booklet

TABLE OF CONTENTS

<u>Schedule of 4-H Activities</u> (will be updated once Blue Hill Fair updates)	2
<u>4-H EXHIBIT HALL</u>	3
<u>4-H Club Exhibits</u>	3
<u>4-H Individual Exhibits</u>	5
<u>Creativity Unlimited</u>	10
<i>Have a unique project idea and are not sure where it fits?</i> <i>Check out the Creativity Unlimited category! We want our youth</i> <i>to follow their sparks and not be limited by our categories.</i>	
<u>Future 4-H'ers Corner</u>	10
<u>4-H Livestock Projects</u>	11
<u>Expectations of 4-H Animal Show Participants</u>	11
<u>4-H Danish Judging System</u>	12
<u>Am I Ready for the Fair?</u>	12
<u>4-H, Good Character, and Showing</u>	13
<u>Awards</u>	15
<u>4-H Food Booth</u>	17
<u>Forms</u>	17

Schedule of 4-H Activities

All shows will be held in the livestock ring unless otherwise specified.

The 4-H Activity Tent & Exhibit Hall is open all weekend for family-friendly hands-on activities. Please stop in to say hello!

Friday, August 1 - Friday, August 22	Monday-Friday 8 am - 4:30 pm	Drop off 4-H exhibits at the Extension Office in Ellsworth anytime during office hours. Or contact us to make other arrangements at 207.667.8212 or extension.hancock@maine.edu
Monday, August 25	4:00 pm	Last chance to drop off 4-H exhibits at Extension Office in Ellsworth
Tuesday, August 26	12:00 pm	Last chance to drop off exhibits at 4-H Exhibit Hall on the Blue Hill Fairgrounds
Wednesday, August 27	9:00 - 2:00 pm	Exhibit Hall Judging (Judges only)
Thursday, August 28	4:00 pm	Fair Opens
	5:00 pm	4-H Hand Spinners Sheep Class
	5:30 pm	Merritt Averill 4-H Sheep Lead Line
Friday, August 29	9:00 am	4-H & Open Sheep Show
	5:00 pm	Youth Sheep & Goat Obstacle Course
Saturday, August 30	9:00 am	4-H & Open Beef Show
Sunday, August 31	9:00 am	Open Dairy Goat Show
	9:00 am	Youth Horse Show (Horse Show Ring)
	10:00 am-1:00 pm	UMaine Touch Tank at the 4-H Exhibit Hall
Monday, September 1	8:30 am	4-H Dairy Goat Show
	12:30 pm	Razor Crosman Award and Dwight Sargent Citizenship Award Announcement in the Livestock Show Ring
	5:00 pm	Drawing of 4-H Steer Ticket Raffle

4-H EXHIBIT HALL

Fair Theme for 2025:
“Growing Futures in Agriculture with 4-H!”

The 4-H Exhibit Hall is a place for 4-H’ers to exhibit their projects to the public! We encourage all Hancock County 4-H’ers (club and independent members) to enter projects into the Exhibit Hall. Entries will be judged on the Danish system and members and clubs are eligible for cash premiums. Entry Forms are required. Participants may enter no more than 10 total projects.

4-H CLUB EXHIBITS

Club Exhibits will be judged on the Danish System

\$30 Blue Ribbon

\$20 Red Ribbon

\$10 White Ribbon

RULE 1: Any club or sub-group within a club can enter a Club Exhibit. 4-H Club Exhibits must be made by the 4-H Members.

RULE 2: Exhibits must not exceed 4’x 4’x 4’.

RULE 3: Clubs must provide their own table on which to place their exhibit. If an electrical outlet is needed, please contact the Extension Office prior to dropping off your exhibit.

RULE 4: The exhibit must include: the name of the club, town/location, and the number or percent of club members who participated in preparing the exhibit.

RULE 5: UMaine Cooperative Extension/4-H and the Blue Hill Fair distinctly disclaim any liability for loss or damage to exhibits. We will afford the best protection possible for exhibits, but please be aware that there is no security in the 4-H Exhibit Hall.

CLUB EXHIBIT

The purpose of this 4-H Club Exhibit is to tell the public about your club’s purpose, projects, interests, and/or activities. The exhibit should incorporate the fair theme “Growing Futures in Agriculture 4-H!”.

The criteria for judging the 4-H Club Exhibits are:

- Theme: The exhibit reflects the 4-H theme of the Blue Hill Fair.
- Appearance: The exhibit is neat, well-organized, easy to understand, and easy to see at a distance.
- Originality: The exhibit shows creativity and originality.
- Spelling/Grammar: The exhibit displays correct spelling, grammar, etc.
- Branding: The exhibit displays the correct use of the 4-H Clover logo, the UMaine Extension/4-H combined logo, 4-H (including the “-” between 4 and H), mottos, etc, if they are used in the display. Consult the Extension Office for Branding Guidelines.

- Club Work: The exhibit highlights the club's purpose, projects, interests, and/or activities and it also helps the public to understand the goals and philosophy of 4-H and your specific club.
- Participation: The exhibit shows evidence of 4-H member involvement in the club.

CLUB GARDEN EXHIBIT

Any 4-H Club in Hancock and surrounding Counties who have four or more members participating in a 4-H Garden Project may submit a group vegetable display. This display of vegetables must fit into a 3'x3' space, and all members must have vegetables entered.

The criteria for judging the 4-H Club Garden Exhibits are:

- Quality: Produce must be clean and appealing.
- Appearance/Arrangement: The exhibit is neat, well-organized, easy to understand, and easy to see at a distance.
- Originality: The exhibit shows creativity and originality.
- Spelling/Grammar: The exhibit displays correct spelling, grammar, etc.
- Branding: The exhibit displays the correct use of the 4-H Clover logo, the UMaine Extension/4-H combined logo, 4-H (including the "-" between 4 and H), mottos, etc, if they are used in the display. Consult the Extension Office for Branding Guidelines.
- Participation: The exhibit shows evidence of 4-H member involvement in the club.

CLUB CIVIC ENGAGEMENT EXHIBIT

The exhibit should consist of a hardcover scrapbook documenting a full year of civic engagement work for your community. Club members should construct the scrapbook collaboratively.

The criteria for judging the 4-H Club Garden Exhibits are:

- Description: Describe each community service/civic engagement activity and list what your goals were, what the club did, who participated, how many people were reached and who were they, how much money was raised (if applicable), etc.
- Evidence: Document each activity with photos, newspaper articles, thank you letters, etc, to show evidence in support of what you did.
- Impacts: Explain the results of your activities, including what you learned and the benefits to the club and community (even if the activity failed to reach your goal).
- 4-H Awareness: How did the activity spread awareness of 4-H in the community? How did your club help make 4-H more visible in the community?
- Creativity: Were the activities diverse, creative, and original?
- Appearance: The exhibit is neat, well-organized, easy to understand, and easy to see at a distance.
- Spelling/Grammar: The exhibit displays correct spelling, grammar, etc.
- Branding: The exhibit displays the correct use of the 4-H Clover logo, the UMaine Extension/4-H combined logo, 4-H (including the "-" between 4 and H), mottos, etc, if they are used in the display. Consult the Extension Office for Branding Guidelines.
- Participation: The exhibit shows evidence of 4-H member involvement in the club.

4-H INDIVIDUAL EXHIBITS

Exhibits will be judged on the Danish System

\$13 Blue Ribbon

\$12 Red Ribbon

\$11 White Ribbon

\$5 Cloverbuds (ages 5-8)

RULE 1: Exhibitors must be an enrolled 4-H Member in Hancock or surrounding counties.

RULE 2: Exhibits must be produced and/or prepared by the 4-H Member during the current 4-H year. Clubs may work together on projects, but individual members are responsible for producing their own entry for the 4-H Individual Exhibits (for example: a club may work together on a sewing project, but the item entered must be made by the individual 4-H member). NO KITS will be accepted (i.e. articles made of pre-cut or pre-formed pieces that are only assembled by the 4-H'er).

RULE 3: Two exhibits may be entered in a given class (example: two different types of vegetable in GARDEN class), with the exception of CRAFTS which may have eight entries with no more than two of the same medium (example: 2 Textiles such as felt and embroidery; and 2 Jewelry pieces). **Youth are not to exceed 10 entries total.**

RULE 4: Poster and artwork sizes must not exceed 24"x 36".

RULE 5: Exhibits must be checked in at the Extension Office in Ellsworth anytime during the month of August, with a deadline of 4 pm on Monday, August 25th. Exhibits can also be brought to the 4-H Exhibit Hall on the Blue Hill Fairgrounds at 12:00 pm on Tuesday, August 26th. Exhibit Card/Life Skills Card and Entry Forms must be completed and attached to the exhibit prior to check-in (these are available at the Extension Office). Exhibits must remain in the 4-H Exhibit Hall until 6 pm on Labor Day or forfeit the premiums.

RULE 6: Judging will be done using the Danish System, which means each worthy exhibit will be awarded a ribbon and premium based on how well it displays the appropriate skills for the member's age and skill level, with the exception of Cloverbuds (see Rule 7). The judges' decisions will be final.

RULE 7: According to the UMaine 4-H Cloverbud Policy, exhibitors ages 5-8 will receive a stipend of \$5 for each exhibit and a special ribbon. Cloverbuds are considered beginner-level, and all entries are submitted for non-competitive display.

RULE 8: There will be 10 "Best Project" Ribbons awarded by the judges, and the exhibitors will also receive an additional \$10 premium. A "Best of Show" will be chosen from the "Best Projects", and the exhibitor will also receive an additional \$15 premium. The decisions of the judges will be final.

RULE 9: For public safety reasons, we will not accept knives, firearms, or any other item that could be considered a weapon as an exhibit. A poster, illustration, or model may be substituted.

RULE 10: UMaine Cooperative Extension/4-H and the Blue Hill Fair distinctly disclaim any liability for loss or damage to exhibits. We will afford the best protection possible for exhibits, but please be aware that there is no security in the 4-H Exhibit Hall.

ANIMALS

Projects Include: Beef, Dairy, Dog, Goat, Horse, Poultry, Sheep, Small Animal, Swine, Working Steer. If showing an animal in a 4-H Livestock show that pays premiums, members may not enter an exhibit for that animal in the 4-H Exhibit Hall. An animal exhibit must consist of one of the following:

- A hardcover or spiral-bound scrapbook illustrating your year's project work OR
- An educational display showing something you learned in the project OR
- A product made for your animal such as a feeder, tack box, halter, lead line, scratching post, etc OR
- A product from your animal such as fleece, yarn, cheese, ½ dozen eggs, etc.

ART

Any original drawing or painting in any medium (such as watercolor, charcoal, paint, pastel, etc). No paint-by-number or tracings. Items must be ready for display (framed, matted, on a stand, etc).

AQUATIC LIFE

Any labeled poster, model, or display relating to aquatic life (such as fishing, aquaponics, vernal pools, etc).

BERRIES

Fresh berries that were grown by the 4-H Member. Place berries in a pint container or plate and include the name of the variety/type for the display.

CIVIC ENGAGEMENT/COMMUNITY SERVICE

Any labeled poster, model, or display that illustrates a project or experience in civic engagement and/or community service OR the importance of civic engagement and/or community service (such as the importance of voting, roadside clean-ups, etc)

CHILD DEVELOPMENT

Any handmade item (such as a toy, game, etc) OR Labeled poster, model, or display that pertains to child development such as nutrition, strategies, safety, ages & stages, etc. Please indicate the child's age.

CLOTHING/SEWING

Any item sewn completely by the 4-H Member such as pillowcases, handbags, clothing, etc. Please indicate skill level (Cloverbud, Novice, Intermediate, or Advanced) and how many years you have been sewing.

CONSERVATION/NATURAL RESOURCES

Any labeled poster, model, or display that illustrates the practice of conserving a resource (such as recycling project, logging, water quality, etc). Must include an explanation of the conservation practice and/or ecological issue.

CRAFTS

Two entries per category (up to 8 items), must be made by the 4-H Member:

- Textiles (such as Knit, Crochet, Embroidery, Macrame, Rug, Quilt, Weaving, Spinning, Felting, String Art, Fabric Painting, etc)
- Paper or Canvas (such as Papermaking, Paper Mache, Origami, Scrapbooking, Bookbinding, Decoupage, Cardmaking, etc)
- Wood, Metal, Glass, Stone (such as Woodcarving, Woodturning, Woodburning, Metalwork, Stained glass, Glassblowing, Pebble art, etc)
- Ceramics (such as Pottery, Sculpture, etc)
- Recycled Art (An item made from discarded materials that once had another purpose and would have otherwise been thrown away)
- Leathercraft
- Jewelry
- Other (such as Basketmaking, Candlemaking, Egg Decorating, Soapmaking, etc)

ELECTRICITY

A display of an electrical circuit or any labeled poster or display illustrating how a circuit works; OR a product, such as a lamp, built and properly wired by the 4-H member.

ENGINEERING

Any original project that demonstrates the application of scientific principles and engineering design processes to solve a problem or meet a need. This category includes, but is not limited to, prototypes, working models, schematics, and detailed plans for inventions or improvements. Projects should clearly articulate the problem addressed, and the function or intended impact of the solution. Submissions should be presented clearly with supporting documentation, labels, display boards, and/or functional prototypes.

FAIR THEME

Any labeled poster, model, or display that illustrates the theme of the 2025 Fair: “Growing Futures in Agriculture with 4-H!” (such as a meme, graphic, etc). The exhibit must be neat, well-organized, easy to understand, easy to see at a distance, and include correct spelling/grammar. The exhibit must show creativity and originality. The exhibit must display the correct use of the 4-H Clover logo, the UMaine Extension/4-H combined logo, 4-H (including the “-” between 4 and H), mottos, etc, if they are used in the display. Consult the Extension Office for Branding Guidelines.

FLOWERS

A fresh flower arrangement is displayed in a container (such as in a vase, corsage, or foam).

FOOD

Any food item (such as bread, cookies, bars, muffins, biscuits, pie, etc.) made by the 4-H member. A recipe card (3x5 inches) must be included. Small food items should be displayed in threes.

FOOD PRESERVATION

Canned: 1-3 jars of either vegetable, fruit, jam, jelly, pickles, or preserves. Dried: 1-3 samples of dried fruit, vegetable, or meat (can be smoked).

FORESTRY

A collection (3 specimens minimum) relating to forestry or forest ecology such as a collection of tree leaves, needles, twigs, seeds, and/or collection of disease, insect, or animal-damaged specimens. Collections must be mounted and labeled with common names and/or scientific names. Damaged specimens must be labeled with the type of damage shown.

GAMES

A game, puzzle, cards, or any other exhibit made by a 4-H member for entertainment purposes.

GARDEN

Small vine crops such as beans, peas, etc (10 specimens); Large vine crops such as cucumbers, pumpkins, squash, etc (1 specimen); Root crops such as potatoes, carrots, beets, onion, etc (3 specimens); Vegetables grown in heads such as broccoli or cauliflower (1 specimen); Other vegetables such as corn, tomatoes, peppers, eggplant, etc (1-3 specimens). Vegetables should be brushed clean (do not wash), trimmed, and fresh. Tomatoes may be green. Place vegetables on a plate and include the name of the variety/type for the display. Best Project in this class will be awarded the Lynn Clement Garden Plaque.

HEALTH & NUTRITION

Any labeled poster, model, or display about health issues, such as nutrition, benefits of exercise, emotional health, sports health, etc.

HERBS

Five stems of a single or multiple herbs arranged in a container with water. Include the name(s) of the variety/type of herb for the display.

INDOOR GARDENING

A display of indoor plants such as a potted houseplant, dish garden or terrarium, dried flower arrangement, indoor vegetable garden, etc.

LEADERSHIP

Any labeled poster, model, or display that illustrates a project or experience in Leadership (such as National 4-H Trip, National 4-H Summit, Leadership in your Clubwork, Leadership at Eastern States Exposition, etc). Must include an explanation of the leadership activity, member's role, and the results of the experience.

MUSIC & MUSICAL INSTRUMENTS

Any labeled poster, model, or display that illustrates to the public what you have learned through your music project (such as sheet music, a homemade instrument, musical recordings (mp3s, CDs, tapes, but please provide something to play them on).

NATURE COLLECTIONS

A collection from nature with at least 10 specimens/samples that follow a theme (for example, shells, pressed flowers/wildflowers, insects, rocks/minerals, items from a specific environment, etc). Collections must be mounted and labeled with common names and/or scientific names. Be sure to leave any protected or endangered species in nature.

OUTDOORS

Any labeled poster, model, or display related to the Outdoors and/or Outdoor Education OR an item made by the 4-H'ers related to the Outdoors and/or Outdoor Education.

PHOTOGRAPHY

Submit a photo displayed on a poster, board, or frame. The photo must be accompanied by a short description of the photo, what inspired the photographer to capture the moment, and how the photo was captured (DSLR, phone camera, etc.)" Note: Youth may also enter the 4-H photo contest in October where they will submit 5 photos from the year for judging and feedback.

SCULPTURE

Any original three-dimensional artwork created in any medium (such as clay, wood, metal, mixed media, found objects, etc.). This category includes carvings, models, assemblages, and constructions. Submissions must be stable and ready for display (e.g., on a self-contained base, stand, or otherwise prepared for presentation).

SCIENCE AND DATA

Any exhibit that showcases a 4-H member's scientific and research data or study. Present data from any science or research project the 4-H member has conducted and share results and conclusions. Example exhibits: a detailed report explaining the research question, hypothesis, methodology, data collected, analysis, and conclusion; a visual representation of the data, such as graphs, charts, tables, infographics, or art pieces (such as a temperature blanket); a concise summary of the project, including the main findings and significance of the research; and/or a science logbook, datasheets, or journal documenting the project's progress, observations, and reflections.

SHOOTING SPORTS

Any labeled poster, model, or display that illustrates a shooting sports project (such as a diagram identifying various parts of a gun; a survival kit with labeled contents and includes the purpose of each content; a 3D model of a gun with labeled parts and functions of each; a model of a safe shooting range with safety rules; etc)

WOODWORKING

Any article made by the 4-H member exhibiting woodworking skills such as joining, cutting, fitting, sanding, finishing, etc. If the project is not portable, make a poster with 4-6 sequential photos that display the woodworking project. No pre-cut kits are permitted; an adult may cut pieces for young members.

WRITING SAMPLER

A Poem, Journal, Short Story, Illustrated Story, or Script for a theatrical production (such as a play, or film) written by the 4-H'er.

CREATIVITY UNLIMITED

Have a unique project idea and are not sure where it fits?

We want our youth to follow their sparks and not be limited by our categories.

An outstanding individual project made entirely by a 4-H member during the current 4-H year, as long as it does not fit under any other category. Approval of this project must be obtained from the Hall Supervisor OR the Extension Office.

"FUTURE 4-H'ERS" CORNER OF THE 4-H EXHIBIT HALL

Do you have a future 4-H'er in your family? A youth who is under 5 years old who cannot WAIT to become a Cloverbud? We invite future 4-H'ers to display their projects this year, too! Submit a project created by a future 4-H'er in any of the [exhibit hall categories](#), accompanied by a cloverbud [entry card](#) (can be filled out by an adult but must be dictated by the youth), and we will put the project on display in a special corner of the 4-H Exhibit Hall. Future 4-H'er projects will not be judged, and are not eligible for ribbons or premiums, but are a great opportunity for younger members of the family to practice their 4-H project skills and put them on display!

4-H Livestock Projects

Important!! *4-H Members must be enrolled by April 1 in order to show in any 4-H classes at the Maine State Fairs in that same year. There is also required paperwork that must be submitted by the deadlines in order to participate.*

The University of Maine Cooperative Extension 4-H livestock program has three goals:

1. To provide opportunities for youth to learn and practice 4-H Life Skills and to develop good character.
2. To teach young people to raise, train, fit, and show an animal using the best practices identified by university research and industry.
3. To provide educational opportunities for 4-H youth and the viewing public to learn about 4-H and all aspects of participation in the show.

Expectations of 4-H Animal Show Participants

In keeping with the goals of learning life and project skills and exercising good character, 4-H members in any animal project are expected to follow these guidelines:

- The member must have worked with the animal enough to minimize disruption in the show ring and be able to safely control his or her animal at all times.
- Members will treat their animals humanely and meet their needs for food, water, and shelter.
- The member is expected to have or be developing the knowledge and skills to fit the animal.
- The member is expected to personally fit their animals for each show entered. No adults are allowed to fit or care for the animals after arrival on the grounds.
- Members raising market animals must document all medications and adhere to all label and withdrawal time requirements.
- Members are expected to follow all requirements for dates of possession and completion of lease and animal approval forms.
- Members will be respectful at all times.
- Members, volunteers, and parents must exhibit good sportsmanship at all times.

4-H Danish Judging System

The Danish system is a method of evaluation where a product or process is evaluated against a set of standards and recognition is awarded on the degree to which the standard has been met by each competitor. In the Danish system of judging, the exhibitors are not judged against each other. In a “true” Danish system the standard of excellence is the same for everyone regardless of age or experience. In 4-H, a “modified” Danish system is used that uses standards adjusted according to the member’s age and years of experience in the project. The Danish system is used in 4-H for ages 9-18 because it is a way to provide recognition to greater numbers of youth who may all be making significant progress in their projects. The Danish system is considered by the National 4-H Policy to be a competitive form of judging and is therefore not to be used for 4-H members under the 4-H age of 9.

In Maine 4-H, ribbons traditionally awarded by the Danish system are:

- Blue – for excellence, exceeding the standards
- Red – for good work that meets the expected standard
- White – for work that falls below the expected standard

Evaluation of Cloverbud Activities

Cloverbuds, 4-H members ages 5 – 8, are not ranked or judged competitively. Cloverbud members will receive identical forms of recognition of participation for work exhibited in exhibition halls or for participation in non-competitive animal demonstrations, skill-a-thons, clinics, or other educational events. Although Cloverbud exhibits or demonstrations are not ranked or scored, it is important for the youth to receive feedback on their work. They may participate in a “show and tell” activity about their exhibit or receive written or oral feedback that includes positive encouragement and constructive suggestions for growth for their exhibits or animal activities.

Am I Ready for the Fair?

Am I ready for the Fair?

Have I thought about how I will use my Fair experience in the future? Am I responsible, respectful, trustworthy, fair, caring, and a good citizen?

- How will I make sure that my animals are well taken care of during the fair?
- How will I support other 4-H members?
- How can I show respect to 4-H volunteers, judges, fair staff, and the public?
- What can I do to make the fair the best experience possible for everyone attending?

Are my Exhibits ready for the Fair?

- Is my project going to represent my best effort and my ongoing project work?
- Have I read the requirements for the exhibit carefully?
- Have I prepared a life skills wheel and an Exhibit Judging card ready for each exhibit?
- How is my project record for my exhibits coming along?

Are my animals ready for the Fair?

- Am I doing everything necessary to make sure my animals will have a safe and stress-free fair?
- Have all my animals that need an approved rabies vaccine, received it?
- Have I checked with my vet to see what other vaccinations my animals might need?
- Am I working with my animal EVERY day to make sure it is ready to be shown?
- Are my forms, including my animal approval and lease forms, vaccination and other immunization forms, and registration papers, all collected in a notebook?

Here are some more tips to help get your animals ready for the fair...

- Start preparing animals 30-60 days before the fair. Get them used to as many fair conditions as possible including noise, being tied or confined, being with other animals, being around strangers. Start them on the same feeding schedule they will be on at the fair.
- To ensure animals drink enough during the fair, add a little molasses or a few drops of lemon juice to their drinking water about two weeks before the fair to cover up the taste. Then, add it to the water at the fair.
- If hooves need to be trimmed, do this 2-3 weeks before the fair so they will have time to toughen.
- If you are raising a market animal, make sure that you are aware of withdrawal times for anything you put into or on your animal. Make sure you have accurate records. Remember that your animal will be processed either during or after the fair and that you are responsible for ensuring that your buyer has a safe product!
- Make sure the trailer you are using is clean and disinfected.

4-H, Good Character, and Showing

Fair season is upon us, and 4-H members are busy getting their projects, demonstrations, and animals ready for the exhibit. Making high-quality exhibits or preparing a demonstration or an animal for showing takes a lot of time and patience.

But also remember that you will be showing something else at the fair, your character.

One of the main reasons we go to fairs is to teach other people about the 4-H program. Learning about and using good character is one of the most important parts of the 4-H program, so all 4-H members are expected to “exhibit” the six pillars of character!

- Before you get to the fair, think about how you are going to prepare to exhibit yourself as a person of good character!
- A person who exhibits good character is trustworthy. Having your own animals for show, being where you say you're going to be, returning what you borrow, and making sure that your market animals meet food safety standards are all ways you can show trustworthiness.
- A person of character is responsible. Responsible 4-H members ensure that their animals have fresh water, food, and a clean space. They do not allow anyone to bother any animal for any reason, even as a joke. Responsible members also make sure that their animals are under control and keep the public's safety foremost in their minds.
- 4-H members of good character are respectful. They treat all other 4-H members, volunteers, and parents politely. They answer questions respectfully even when they have heard the question 100 times already. Respectful behavior means treating judges and other fair officials courteously, accepting judges' decisions gracefully, congratulating members who win classes, and managing to stay calm and positive when things don't go their way.
- Fairness and caring should also be shown by 4-H members. Fairness requires that members do their own work and never submit anything as theirs that was not done by them. Fairness means following the rules and treating all fellow competitors as you want them to treat you. 4-H members show caring by sharing their knowledge and equipment with younger members. They do not engage in rough behavior where someone could get hurt. They do not pull pranks on other members of their exhibits.
- Finally, 4-H exhibitors show that they are good citizens. They are in their area when they are supposed to be there and help keep it neat and attractive. They are on time for shows and events, and they follow the 4-H rules of the fair.
- Every member should make sure what you "show" of yourself is blue ribbon quality!

Awards

RAZOR CROSMAN SPORTSMANSHIP AWARD

Available to any 4-H member ages 9 and up who is exhibiting Livestock at the Blue Hill Fair.

The chosen recipient will be selected by three judges who work independently and are unknown to each other as far as being judges for this event. The judges are people who are familiar with all the 4-H activities at the fair and the criteria for this award. The judges will go through the barn, 4-H Exhibit Hall, Show Ring, and other 4-H areas. The judges go through the areas several times during the fair, and usually, do so unobserved.

The judges look for clean stalls, pen, and animals that are being taken care of by the 4-H member. The 4-H Member should always be willing to greet people and answer any questions they may have about 4-H and/or their project. The judges check to see who is willing to help another 4-H member with his or her chores.

The 4-H Exhibit Hall is also checked to see who entered projects for display, as well as the Steer Ticket Sales and Food Booth areas.

Scoring is as follows:

- The Barn Area – 25 possible points
- Exhibition Hall – 20 possible points
- Steer Ticket Sales – 20 possible points
- Food Booth – 20 possible points
- Any other Discretionary Area – 20 possible points
- *Total Possible Score = 100 Points*

The score sheets are turned in to the program coordinator who passes them on to another person to be tabulated, who then will announce the winner to the program coordinator.

There is no prize money for this award. A trophy will be awarded at Cloverfest.

Dwight Sargent 4-H Citizenship Award

The Dwight Sargent Citizenship Award is open to all 4-H members (ages 9+) not participating in the Livestock Show (sheep, beef, dairy, and goat) at the Blue Hill Fair.

The judges look for 4-H members who participate or help in 4-H activities such as working at the Food Booth, Steer Ticket Sales, Activity Tent, Horse Show, etc.

The judges look for youth who are willing to greet people and answer any questions they have about 4-H and/or their project. Judges check to see who is willing to help another 4-H member or volunteer to help in a variety of ways.

The 4-H Exhibit Hall is also checked to see who entered projects for display.

Scoring is as follows:

- Food Booth - 25 possible points
- Exhibition Hall - 20 possible points
- Steer Ticket Sales Pre-Fair - 15 possible points
- Steer Ticket Sales @ Fair - 20 possible points
- Any other Discretionary Area - 20 possible points
- *Total Possible Score = 100 Points*

The score sheets are turned in to a designee appointed by the Leaders' Association President and tabulated. The winner will be announced on Labor Day, Monday. A trophy will be awarded at Cloverfest.

The chosen recipient will be selected by three judges who work independently and are unknown to each other as far as being judges for this event. The judges are people who are familiar with all the 4-H activities at the fair and the criteria for this award.

What are possible "other Discretionary Areas"?

- Volunteer to help before the fair starts with cleaning the food booth or painting 4-H areas.
- Help at the Horse Show on Sunday handing out ribbons, opening gates, for classes, taking pictures, being a runner for the announcer. Volunteer to do ribbons at the Livestock shows.
- Participate in the Cake Contest or Chili Cookoff.
- Photograph 4-H activities at the fair and share with Extension Office to use for promotional materials.
- Lead an activity in the 4-H Activity Tent.
- Help collect returnables at the end of a Food Booth shift.

4-H Food Booth

The 4-H Food Booth and Steer Ticket Raffle are the two largest fundraisers for the Hancock County 4-H Leaders' Association. The funds raised support the 4-H programs you love all year long—Cloverfest, June Jamboree, Public Speaking, Style Revue, Leaders Banquet, and so much more! We rely on our strong 4-H community to deliver quality youth programs in Hancock County, and we are asking 4-H Clubs, Groups, Independents, and Parents/Guardians to volunteer their time during the Blue Hill Fair.

We need:

- Youth (16 and up with an adult) AND Adult Volunteers for the 4-H Food Booth: “Front” of the booth (taking orders, distributing food), and “Back” of the booth (cooking burgers, hot dogs, restocking, prepping, etc)
- Youth AND Adult Volunteers for the Steer Ticket Table: Selling Steer Tickets to fairgoers. Adults need to handle the money.

If you haven't volunteered at the fair before, please consider contributing to this important cause this year! To volunteer in the food booth, sign up [online](#) or contact the Extension Office: extension.hancock@maine.edu, (207) 667-8212

Forms

The remaining pages in this booklet are required fair forms as follows:

Forms for entering projects in the Exhibit Hall

- Request cards by contacting the Extension Office or download at the links below
 - [Entry Form for 4-H Exhibit Hall](#)
 - [Future 4-H'ers Exhibit Card & Project Questions](#)
 - [Cloverbud Exhibit Card & Project Questions \(5-8\)](#)
 - [4-H Exhibit Card & Project Questions \(9 and up\)](#)

Forms for showing Livestock:

- [Animal Approval Form](#) – Due June 30 to the Extension Office
- [Lease Form](#) if applicable
- Maine Association of Livestock Exhibitors Insurance. Membership in this organization covers families with liability insurance: mainelivestockexhibitors.org/memberships
- Livestock Entry Forms:
 - [Youth Open Horse Show](#)
 - [4-H Dairy Goat](#)

