

## U.S. Farms & Work Force

Facts and Figures about U.S. agriculture are gathered every five years by USDA's National Agricultural Statistics Service ([www.agcensus.usda.gov](http://www.agcensus.usda.gov)). The most current facts are from the 2012 Census of Agriculture.

**2.17 Million Farms**  
**2.7 Million Hired Farm Workers**

**731,000 Youth Working In Agriculture**

**65%** of youth are working on a family farm

**35%** of youth are working for non-family

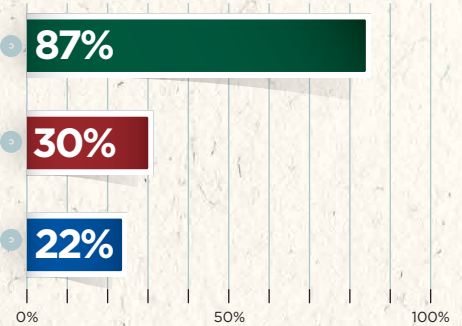
Hired workers (employees) perform an estimated **60% OF THE WORK** on U.S. farms and about **80% OF HIRED FARM WORKERS** are foreign born.

**FARMS WITH SALES ≥ \$1 MILLION (4% OF ALL FARMS) GENERATE 2/3 OF ALL PRODUCTS.**

87% of farms are operated by families or individuals.

30% of farm operators are female.

22% of farm operators are "new" having been farming less than a year

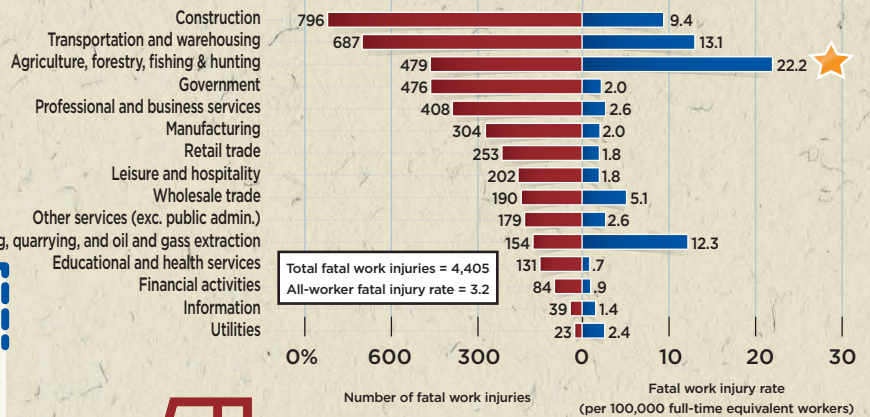


## Agriculture-related Deaths

US Bureau of Labor Statistics clusters agriculture with forestry and fishing. The 2013 report ([www.bls.gov/news.release/pdf/cfoi.pdf](http://www.bls.gov/news.release/pdf/cfoi.pdf)) revealed the below information:

Across all industries, **Agriculture/Forestry/Fishing** has the highest rate of occupational deaths, followed by transportation, mining and construction.

### Number and rate of fatal occupational injuries, by industry sector



**480** farm work-related deaths occur per year for annual rate of 22.2 deaths per 100,000 workers.

**115** children ages 0-19 die each year.

**About 4/5** of these children were present in the workplace, but not working.



**Tractors** are the leading cause of death, with about 125 per year.

Other deaths involve livestock, falls from heights, and suffocation from grain or gases.

## Agriculture-related Nonfatal Injuries

There are no official statistics of nonfatal injuries; data is gathered from periodic surveys and other sources such as workers compensation data.



Every day, about 38 children are injured and only 20% of them were working when injured.

### Most common work injuries:

- Livestock
- Falls from surfaces
- Vehicles/Machinery



Every day, about 167 agricultural workers suffer lost-work-time injuries and 5% of these involve permanent impairment.

## Cost of Agricultural Injuries

The **annual cost** of occupational injuries in agriculture is **\$8.3 BILLION** in medical costs and lost productivity.

The cost of youth deaths is **\$420 MILLION** per year.

**8.3 BILLION \$**



In **\$1 bills**, if put end to end, those 8.3 billion dollars would stretch around Earth's equator **31.5 times**.

## Injury Costs At One Farm Include:

- Average reduced income by 30% (exceeds industry average)
- Loss of productive worker
- Loss of machinery that is broken or impounded
- Reduced production outputs impacted by disruption
- Emotional distress among witnesses and co-workers
- Hiring, replacement and re-training costs



**\$** The mean cost of a tractor overturn: **\$1,000,000**

## Investing in Safety for Profits

Studies show a good safety program saves \$4 to \$6 for every \$1 invested.

Every \$1 invested in tractor ROPS installation yields \$3.75 investment return.



Providing a safe, secure work place is a shared value between employers and farm workers

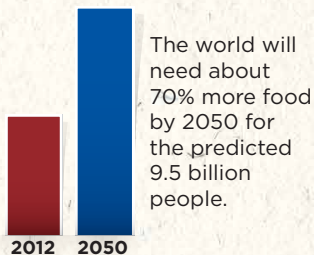


OSHA provides a Safety Pays Calculator to determine specific savings

## Safety reduces worker injuries and illnesses

- Workers' compensation costs decline
- Medical costs decline
- Worker morale and productivity increase

## Feeding the World



Efficient, productive and sustainable agriculture includes the **preservation** and well-being of agricultural workers at **every level.**



Even the most efficient machinery and production systems require human operators.