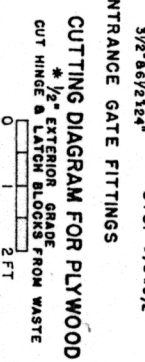
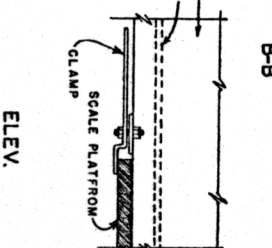
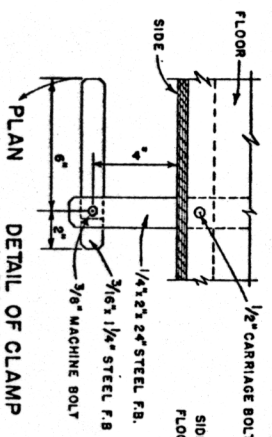
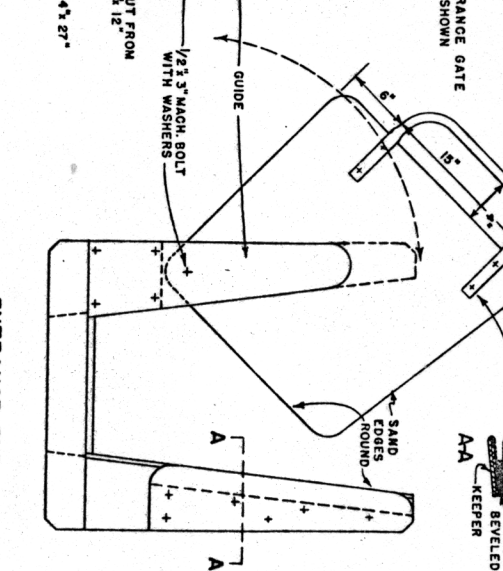
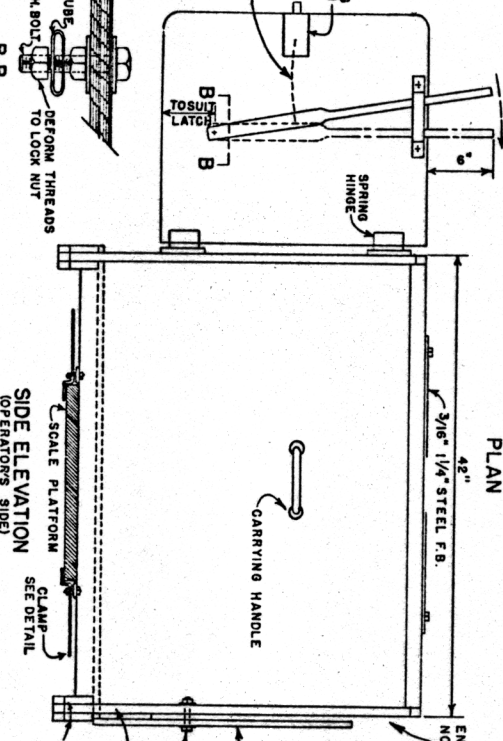
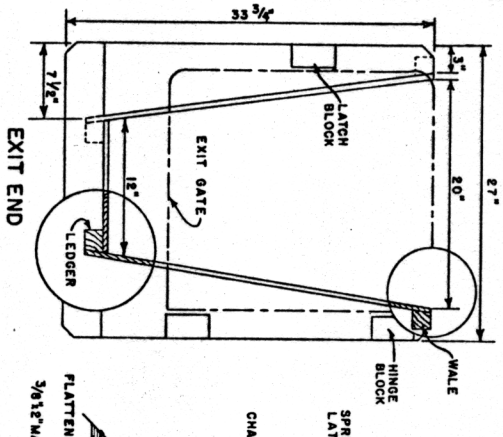
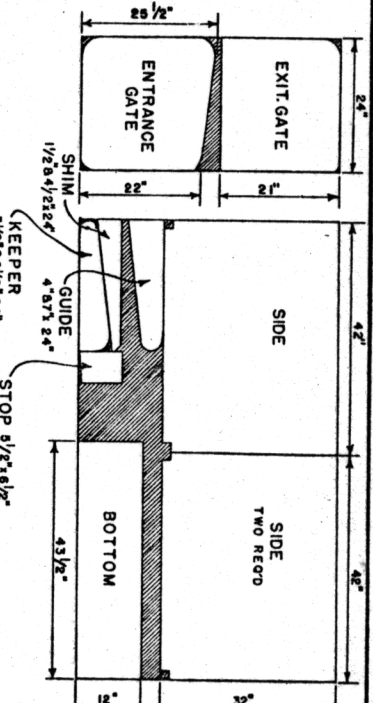
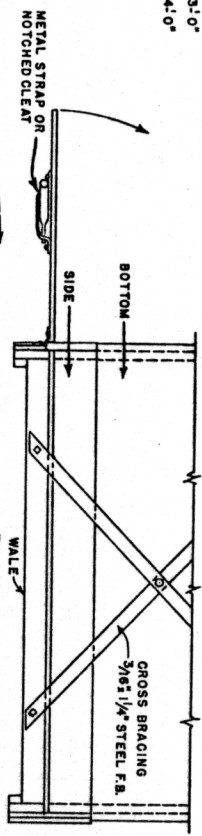
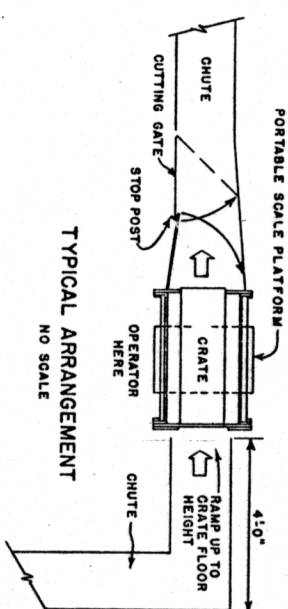


LIST OF MATERIALS

ITEM	SIZE	QUANTITY
LEDGERS & WALES	2" x 4" x 7'-0"	1 PC.
END FRAMES	1" x 2" x 6'-0"	1
	1" x 4" x 10'-0"	1
PLYWOOD PARTS	1/2" x 4'-0" x 7'-0"	1 PANEL
	1/2" x 2'-0" x 4'-0"	1

HARDWARE:

GATE HANDLES	3/4" METAL TUBING	4-6"
HINGES	SPRING TYPE	2
LATCH		2
CARRYING HANDLES		2
CROSS BRACING	3/8" x 1/4" F.B.	6'-0"
CLAMPS		3'-0"
		4'-0"



GENERAL NOTES:
ASSEMBLE GRATE WITH SCREWS AND BOLTS. USE RUSTPROOF FASTENINGS AND OTHER METAL PARTS WHERE POSSIBLE.
ALL WOODEN PARTS SHOULD BE THOROUGHLY BRUSH-COATED WITH COPPER NAPHTHENE AFTER CUTTING.

1 FT. UNLESS OTHERWISE NOTED.
COOPERATIVE EXTENSION WORK IN AGRICULTURE AND HOME ECONOMICS DEPARTMENT OF AGRICULTURAL ENGINEERING UNIVERSITY OF MARYLAND
UNITED STATES DEPARTMENT OF AGRICULTURE COOPERATING
WEIGHING GRATE FOR SHEEP
USDA 60 EX-5877 SHEET 1 OF 1